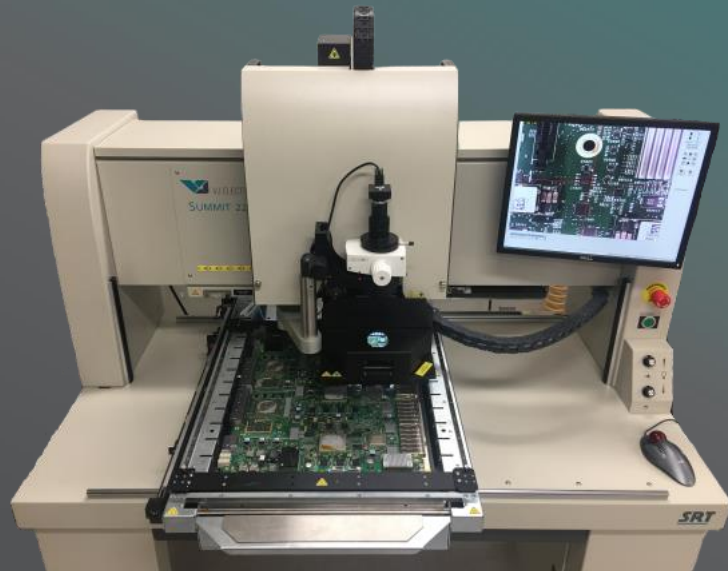


Summit 2200i

Automatic, High-Precision Rework System



**Largest Installed Base • Excellent Thermal Performance • Process Flexibility
Ease of Operation • Global Support • Industry Leading Reliability**

Dual Heads – Dual Rework and Scavenger heads provide the capability to perform complete rework in a single thermal cycle.

Fully Programmable Full user control of all programmable features. Key features include:

- Motorized top heater travel
- Motorized component pick-up tube
- Zero force component removal
- Component height sensing
- Component alignment view height
- Component pick from nest
- Positioning of shuttle, part nest, and vision optics

Multi-Sequence Run – Ability to perform removal, scavenge, replace, and reflow on multiple components in a single cycle without any operator intervention.

Comprehensive Tooling – Wide range of tooling available to meet your current and future rework needs.

Efficient Convection Heating – Closed-loop temperature control ensures a more even heat distribution as compared to IR heating.

- Boost flow increases heating capacity at lower temperatures
- Industry-leading speed, control, repeatability

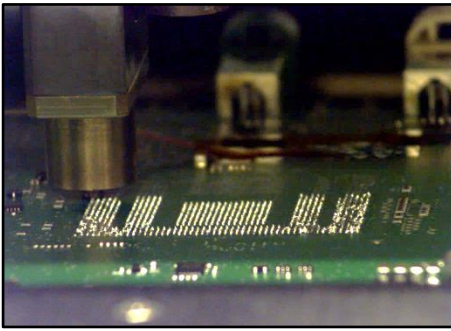
Auto Profiling Capability – Fast and easy profile creation. Simply enter the desired product temperatures. After thermal profile is created, the entire reflow process is built automatically and ready to run.

Non-Contact Site Scavenging – Dynamic height sensing control of distance between the scavenger tip and PCB (scavenger gap).

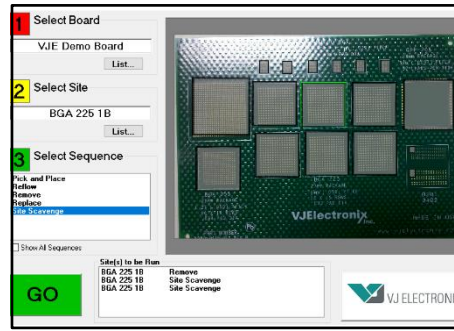
- Minimized risk of damaged pads

Industry 4.0 Compliant – Automated data/event logging directly to your EMS.

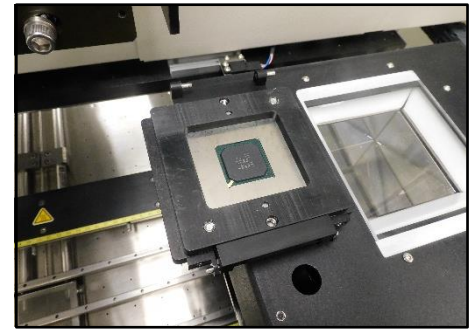
- Enhanced profile sharing and user collaboration



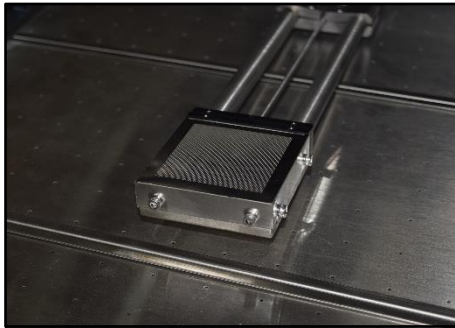
SOLDER SCAVENGER WITH DYNAMIC HEIGHT SENSING



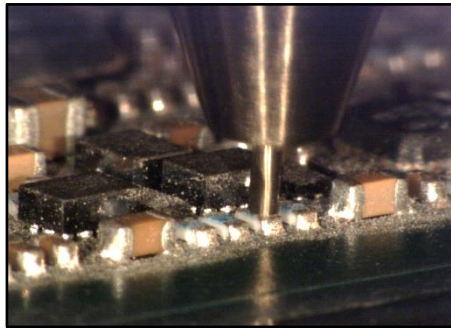
1-2-3-GO SIERRAMATE™ GRAPHICAL USER INTERFACE



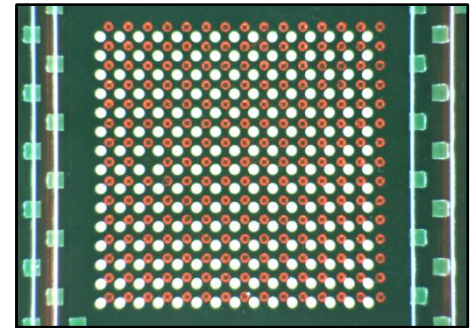
COMPONENT PRINT STATION



DUAL CONVECTION BOTTOM HEATERS



01005 REWORK



OPTICAL ALIGNMENT SYSTEM

Technical Specifications

Placement Capability	0.0005" (12μ) mean + 3σ	
Top Heater	1.6kW Focused Convection 2.2kW Boost Heat Mode	
Bottom Heater	4.0kW Convection Plenum	7.8kW NextGen Plenum (option)
Z-Axis Motion	Independent & Programmable Z-Height Pickup Tube Independent & Programmable Z-Height Top Heater	
Theta Motion	Programmable Motorized Theta - 360°	
Field of View	2.5" (65mm) Square	3.2" (80mm) Square (option)
Max Board Size	18x22" (455x560mm)	22x30" (560x760mm) (option)
Component Range	0.005" (0.12mm) to 8" (200mm) Connectors	
Temperature Control	K-Type Thermocouple (Closed-Loop)	
Thermocouple Jacks	6	14 (option)
Compliance	CE, CAN/CSA, UL 61010-1	
Special Features	Automatic Component & Vision Shuttle Programmable Placement Force Control Automatic Component Height Sensing & Alignment Height	

Why choose VJ Electronix

In a highly competitive SMT manufacturing market, quality and productivity are critical. VJ Electronix develops and manufactures all their products with this in mind. For decades, we have secured leading positions in a variety of markets through technological firsts and a variety of innovative customer-specific solutions.

VJ Electronix is the leader in rework equipment. VJ Electronix's equipment help improve manufacturing costs and product quality.

VJ Electronix, Inc.
19 Alpha Road
Chelmsford, MA, 01824
USA

Phone: +1 978 486 4777
www.vjelectronix.com

VJ Offices:
Bohemia NY
East Haven CT
Suzhou, China

Hartzviller, France
Bengaluru, India
Budapest, Hungary