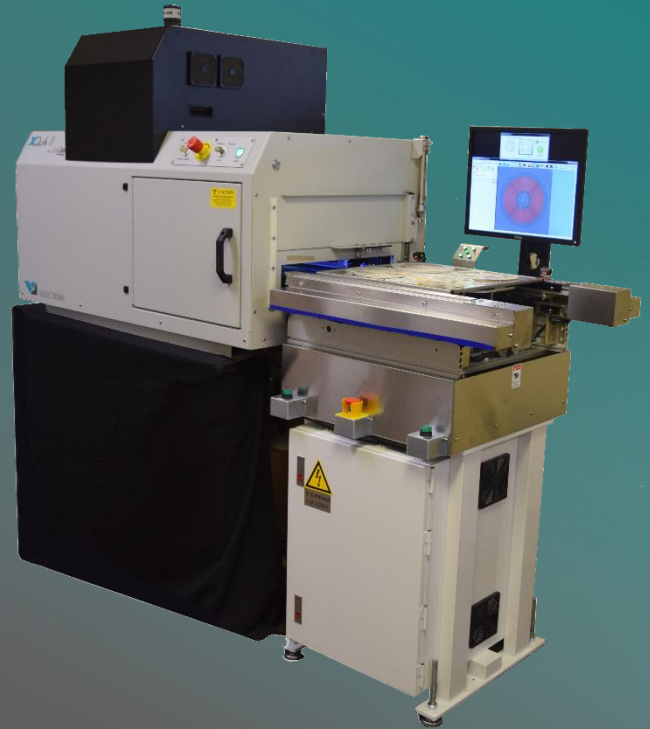
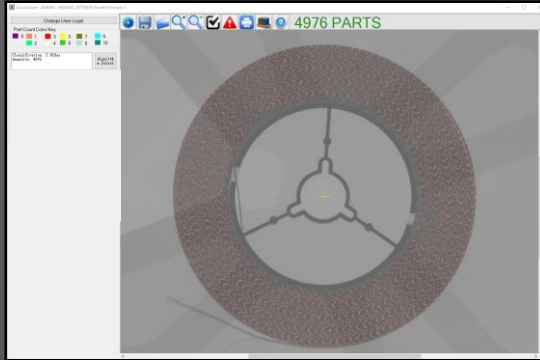


# XQuik II AutoLoad

With AccuCount Technology



**Largest Installed Base • Highest Count Accuracy • Best ROI • Global Support  
Compact Footprint • User-Friendly Interface • Instant MES Updates**

**Automatic Component Recognition** – No programming or teaching required. System automatically recognizes components with AI technology.

**Autoload** – Integrated bilateral conveyors allow for loading of four 7" reels or one 15" reel while scan is being performed increasing overall throughput.

**Industry 4.0 Compliant** – Open Interface allows data to be directly uploaded to your ERP optimizing resource management.

- Maximized system utilization
- Increased knowledge sharing and collaboration

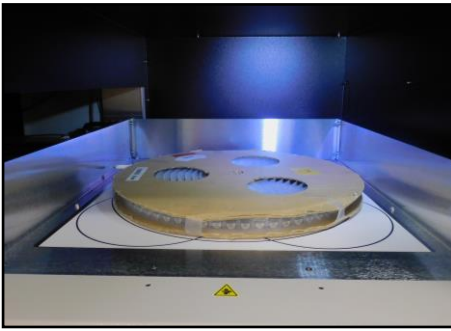
**Count Accuracy Check** – To assist in a review, the count image may be magnified and displayed in color coding.

**High Accuracy** – Component counting accuracy of over 99.8% on most components with coverage of small component types like 01005.

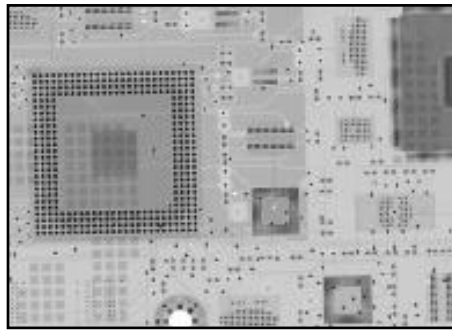
**Automatic Reel Detection** – Built-in sensors allow for reel location to automatically be determined when placed inside of the system.

**Easy Setup** – XQuik II occupies much less space than typical X-Ray inspection systems. Fast plug and play setup makes installation easy. Operator training only takes a few minutes due to one button operation.

**Scanning Flexibility** – The XQuik II has a wide range of applications including JEDEC trays, cut strips, desiccant bags, and more!



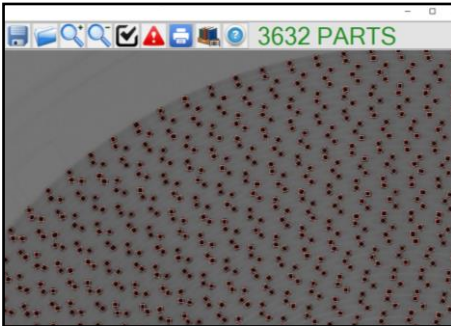
15" REELS



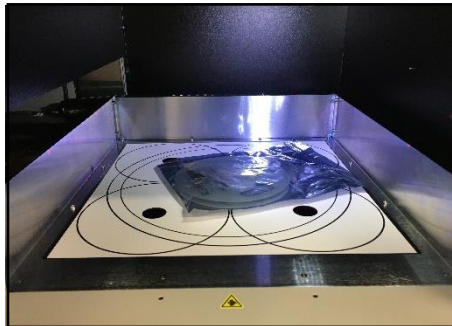
PCB INSPECTION



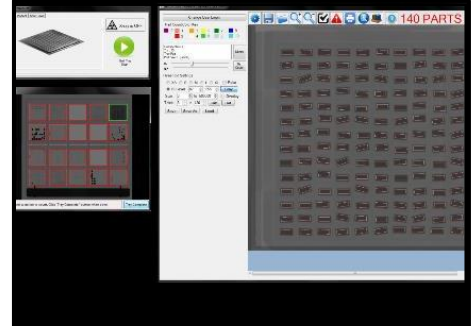
QUADCOUNT



01005 COMPONENTS



ESD AND MOISTURE SENSITIVE BAGS



WAFFLE PACKS

### Technical Specifications

|                       |  |
|-----------------------|--|
| Cycle Time            | <30 seconds  |
| Max. Reel Diameter    | 15 in (380 mm)   |
| Max. Reel Height      | 4 in (100 mm)  |
| Min. Component Size   | 01005 (0402 mm)  |
| Accuracy              | >99.8%   |
| Detector Type         | Linear   |
| Component Exposure    | <0.1 mR/hr (1.0 uSV/hr)                                  |
| Electrical Connection | 100 – 240 VAC, 1400 W                                    |
| System Dimensions     | 47x29x40in (1181x736x1017mm)                             |
| System Weight         | 540 lb (245kg)   |
| Certification         | CE & FDA   |
| Popular Options       | Robotic Integration<br>Barcode Reader<br>Barcode Printer |

## Why choose VJ Electronix

In a highly competitive SMT manufacturing market, quality and productivity are critical. VJ Electronix develops and manufactures all their products with this in mind. For decades, we have secured leading positions in a variety of markets through technological firsts and a variety of innovative customer-specific solutions.

VJ Electronix is the leader in x-ray counting, x-ray inspection and rework systems. VJ Electronix's equipment help improve manufacturing costs and product quality.

VJ Electronix, Inc.  
19 Alpha Road  
Chelmsford, MA, 01824  
USA

Phone: +1 978 486 4777  
[www.vjelectronix.com](http://www.vjelectronix.com)

VJ Offices:  
Bohemia NY  
East Haven CT  
Suzhou, China

Hartsviller, France  
Bengaluru, India  
Budapest, Hungary